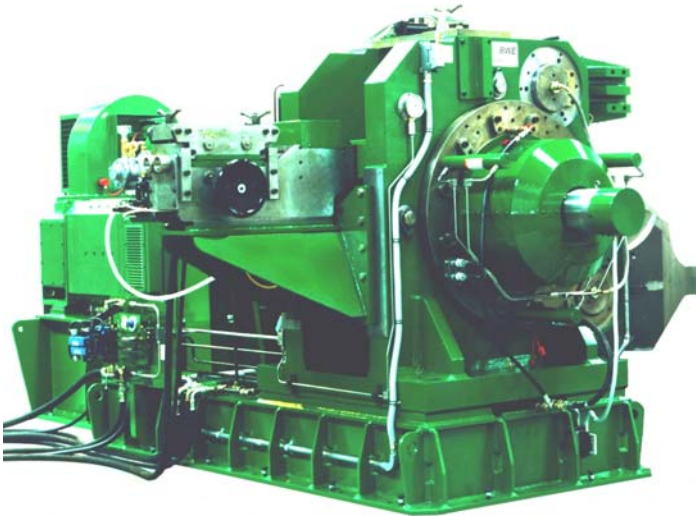


CONFORM™ CONKLAD™

Continuous Extrusion Machine

Conform/Conklad 550



Conform 550

The **BWE 550 Model** is available in Conform and Conklad and Universal configurations.

The Conform version is used for **Large Aluminium Sections, Copper Bus Bars and Copper Sections** while the Conklad version is used for **Large Aluminium Cladding and Sheathing** applications. The Universal format allows the machine to operate either in Conform or Conklad configuration.

The basic machine construction is based on the proven BWE design, which has an excellent record of reliable operation over many years of service.

Extreme rigidity, the ability to operate at high extrusion pressures and separately controlled wheel and die temperature ensures that tooling clearances remain optimal throughout long periods of continuous operation.

Automatic Die Heating and Wheel Cooling Systems ensure rapid pre-heat to the correct starting temperature and maintain optimum extrusion conditions during production without operator intervention. Overall economics are further improved by a **Low-Cost Wheel System** that utilises a special pre-load arrangement to achieve significantly more tonnage than competitive wheel systems and BWE's recently developed **Inserted Tooling** that allows the wearing surface of the main tooling component, the die chamber, to be replaced at minimal cost.

The 550 is available in a range of models starting with a basic 400 kW machine. The basic machine uses manual feed and has a built-in Siemens micro PLC with touch screen for controlling machine functions and a product take-up (BWE or customer supplied). Options include a 500kW drive system, powered feedstock guillotine and a control console with a full-size PLC and graphic display for process monitoring and data logging.

BWE offers a wide range of services tailored to the customers' needs ranging from machine only supply with customers providing their own ancillaries to full turn-key systems including plant engineering, training, installation and commissioning.

Performance:

- Automatic Die Heating
- Automatic Wheel Cooling
- Rigid Construction
- Long-term Stability

Economy:

- Low Cost Wheel System
- Inserted Tooling
- High Reliability
- Low Capital Cost

Specification

Wheel Diameter (mm): 550
Rated Power (kW) 400/500

Conform Mode:

Aluminium Feedstock (mm):
Minimum: 12.0
Maximum: 25.4

Copper Feedstock (mm):
Minimum: 12.0
Maximum: 22.0

Aluminium Products:
Standard Die Circle (mm): 90
Expansion Die Circle (mm): 150

Copper Products:
Maximum Width (mm): 125
Maximum Area (mm²): 2,400

Conklad Mode:

Aluminium Feedstock (mm):
Minimum: 12.0
Maximum: 15.0

Standard Die Circle (mm):
Aluminium: 50
Expansion Die Circle (mm):
Aluminium: 150

- CONFORM and CONKLAD are Trademarks of BWE Ltd -

0304

Cold Welding · Continuous Extrusion · Continuous Cladding · Continuous Sheathing

 **BWE** Ltd

Beaver Industrial Estate · Ashford · Kent · England
Tel: +44 (0)1233 627736 · Fax: +44 (0)1233 630670
Email: mail@bwe.co.uk · www.conform.com